

TURNING OFF YOUR GAS: HOW. WHEN. WHY.

Find your gas shutoff valve, and learn how it works.
Keep an appropriate wrench at the shutoff valve for emergencies.
After an earthquake or accident, shut off your gas IF you:

HEAR IT



hissing
leak

OR

SEE IT



spinning dials

OR

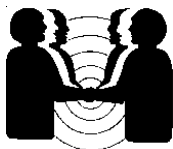
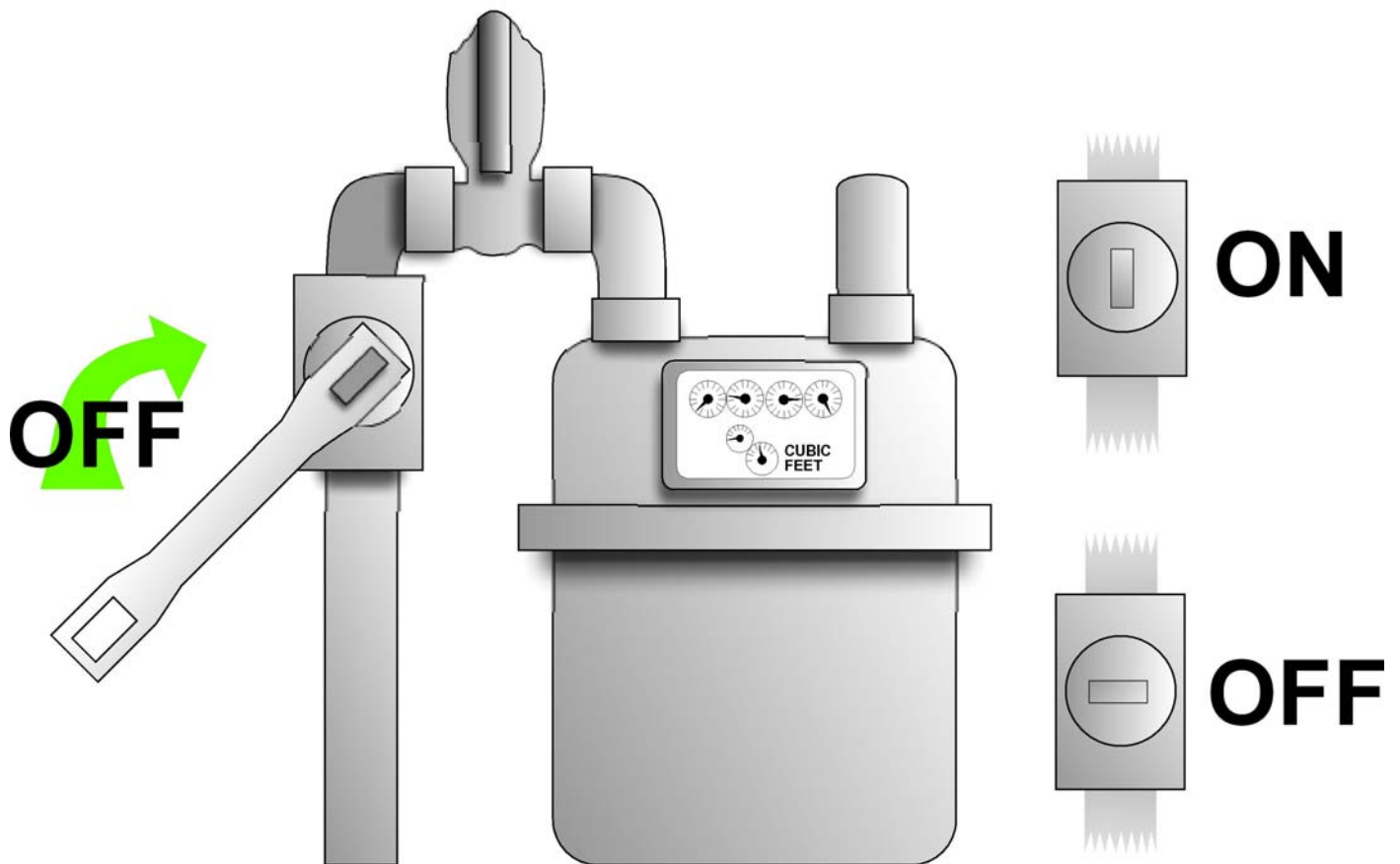
SMELL IT



odor
of gas

REMEMBER: DO NOT TURN YOUR GAS BACK ON!

Only your gas company can do so safely.



CARD (Collaborating Agencies Responding to Disasters)
(510) 451-3140 | www.FirstVictims.org | info@firstvictims.org

CARD is a 501(c)3 nonprofit organization. To make a donation, call (510) 451-3140