

Marin County **BE PREPARED**

EVERYDAY SAFETY



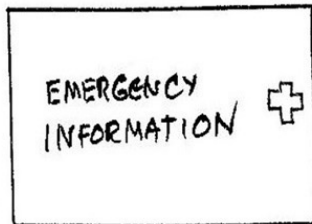
Keychain Flashlight/ Whistle:

Alerting and communication system at your fingertips



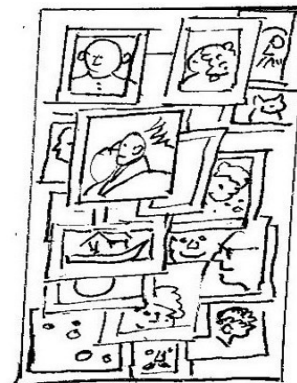
Disaster Jewelry:

Carry cash in an inconspicuous place for when ATMs don't work



Emergency Info:

Information about individuals disabilities/conditions, special medications, blood type, etc.



Pictures:

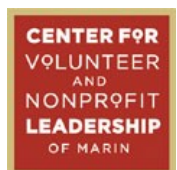
Carry pictures of loved ones in case you're separated

WALK THE WORLD CONFIDENTLY

Take a step in the right direction for better preparedness by always carrying safety with you



For more information, visit www.72hours.org



Download additional Captive Audience posters at www.cvn1.org