



Sonoma County Human Race
Saturday, May 7th, 2022
Old Courthouse Square, Santa Rosa

Community Village Booth Assignments

Arrival & Set-Up. 6:30 AM

Please plan to arrive, park, and be onsite in the community village as early as 6:30 am to begin booth set up. Race participants will begin arriving by 7:00 am for registration.

Race Day Schedule

6:30 AM Arrive and park, begin Community Village set up

7:00 - 7:30 AM Registration is open

8:00 AM Race begins!

8:00 - 11:00 AM Community Village and Kids Zone, open

9:30 AM Awards Ceremony, Main stage

11:00 AM Event ends, see you next year!

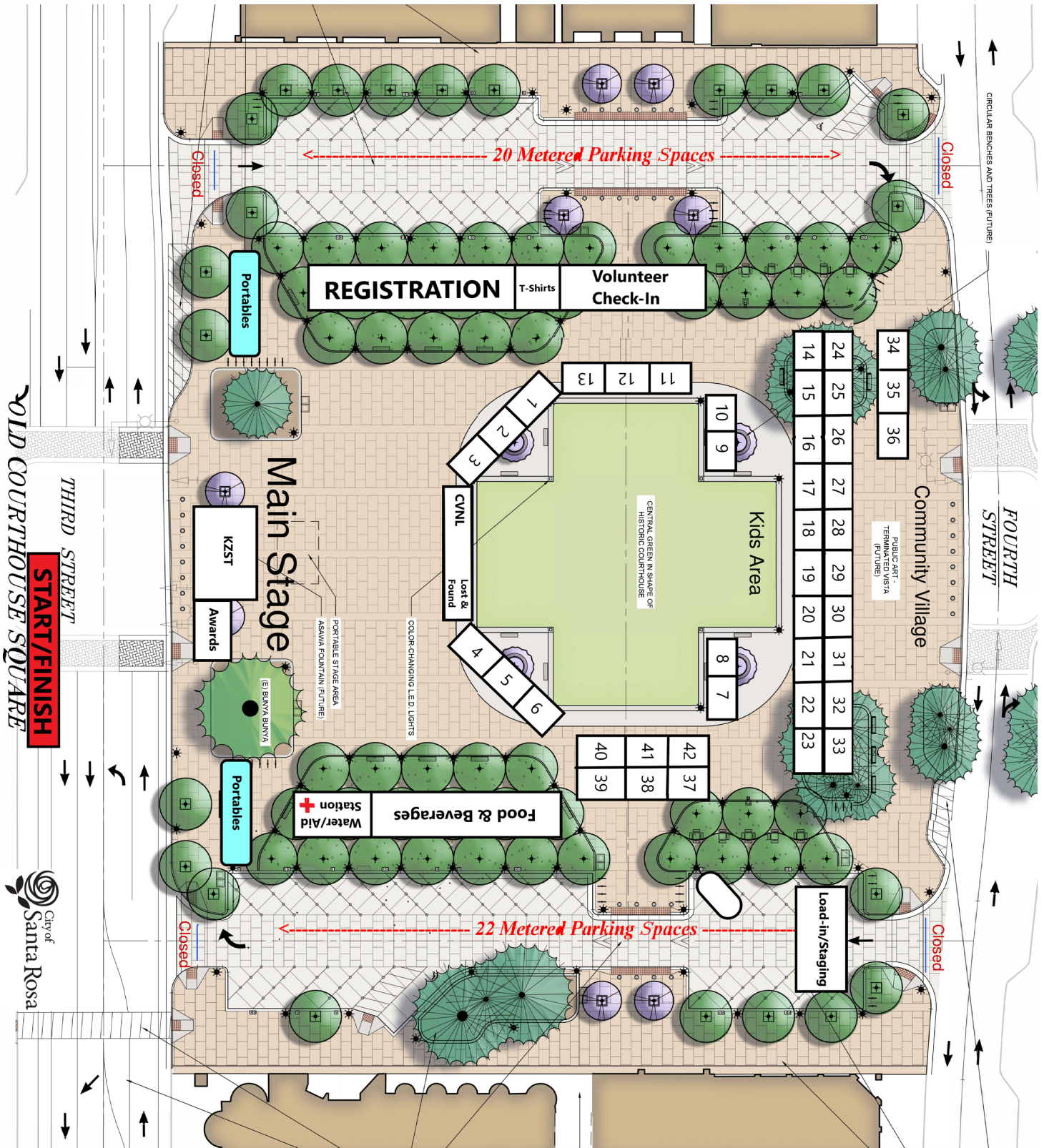
Fundraisers! May 20, 5:00 PM Last day to turn in donations!

Race Day Parking

The city of Santa Rosa is encouraging all Human Race participants to use **1st Street** and **3rd Street** garages for race day parking. Parking is free in Santa Rosa City garages on Saturdays and Sundays. **Please see the parking map on the back page.**

Community Village Map

Sonoma County Human Race



Community Village Booth Numbers

Sonoma County Human Race

Business Name	Booth Number
Summit State Bank	1
Hansel Auto Body	2
Top Drive Sports	3
Wow Smiles	4
Luther Burbank Savings	5
Heart & Sole	6
Friedman's Home Improvement	7
Exchange Bank	8
TLCD Architechture	9
Redwood Credit Union	10
Better Beginnings Mom & Baby Booth	11
Better Beginnings for Babies	12
Kaiser Permanente	13
COTS	14
North Bay Cancer Alliance	15
Conservation Corps North Bay	16
Curves Santa Rosa	17
First Responder Therapy Dogs	18
CASA (donated by Keysight Technologies)	19
River to Coast Children's Services	20
Food for Thought	21
InterFaith Shelter Network	22
Sonoma Clean Power	23
Simpson Sheet Metal	24
Disability Services & Legal Center	25
Disability Services & Legal Center (ADRH)	26
Verity	27
VIDAS	28
Redwood Empire Food Bank	29
Sonoma County Pride	30
The Living Room	31
The Alzheimer's Association	32
Becoming Independent	33
Amateur Radio	34
Eckankar - The Path of Spiritual Freedom	35
Memorial Hospice-St Joseph Health Hospice Ser	36
The Children's Museum of Sonoma County	37
Forgotten Felines of Sonoma County	38
Anova Center for Education	39
North Bay Industries	40
Chop's Teen Club	41
Ella Bisbee Fund	42